



Community Forests: Supporting Resiliency in Rural BC

Carly Dow
Manager of Communications & Outreach
BC Community Forest Association

Randy Spyksma
President - BC Community Forest Association
Manager – Logan Lake Community Forest

April 2025



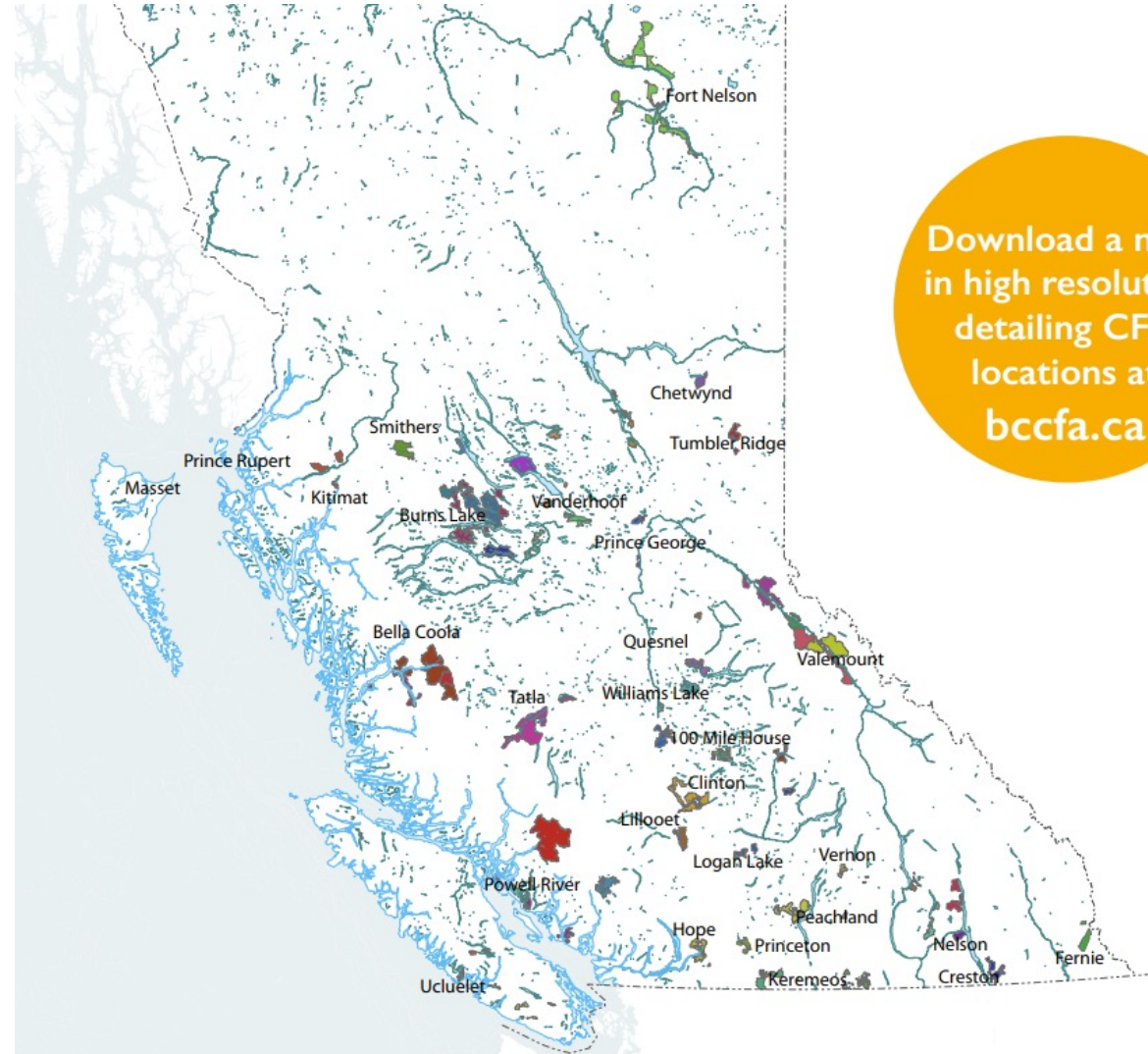
Presentation Outline

- Background on Community Forest Agreements in BC
- Benefits of Community Forestry
- Community Forest Expansion
- What Communities Can Do Now
- Q&A



Community Forest Agreement (CFA)

1. Community managed
2. Long-term
3. Area-based
4. Exclusive right to harvest timber
5. Right to manage botanical and other prescribed products
6. Can't be sold



BC Community Forests Profile

- Range in size from 361 to 184,682 hectares,
- Current annual harvest from 860 m³ to 194,226 m³.
- Most are under 50,000 m³/year.
- Average AAC 37,006 m³/year.

AAC (m ³)		
	#	%
<10000	6	10%
10,001-20,000	17	28%
20,001-30,000	16	26%
30,001-40,000	7	11%
40,001-50,000	5	8%
50,001-60,000	2	3%
60,001-70,000	1	2%
70,001-80,000	1	2%
80,001-90,000	2	3%
>100,000	4	7%

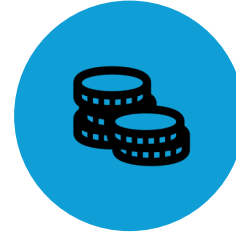
Provincial Goals of the CF Program



PROVIDE LONG-TERM
OPPORTUNITIES FOR
ACHIEVING A RANGE OF
COMMUNITY OBJECTIVES,
VALUES AND PRIORITIES



DIVERSIFY THE USE OF AND
BENEFITS DERIVED FROM
THE COMMUNITY FOREST
AGREEMENT AREA



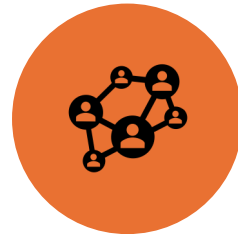
PROVIDE SOCIAL AND
ECONOMIC BENEFITS TO
BRITISH COLUMBIA



UNDERTAKE CF CONSISTENT
WITH SOUND PRINCIPLES OF
ENVIRONMENTAL
STEWARDSHIP THAT
REFLECT A BROAD
SPECTRUM OF VALUES



PROMOTE COMMUNITY
INVOLVEMENT AND
PARTICIPATION



PROMOTE COMMUNICATION
AND STRENGTHEN
RELATIONSHIPS BETWEEN
INDIGENOUS AND NON-
INDIGENOUS COMMUNITIES
AND PERSONS



FOSTER INNOVATION



ADVOCATE FOREST WORKER
SAFETY

Indigenous Collaboration

- Half of all community forests in BC are held by First Nations are a partnership between Indigenous and non-Indigenous communities.
- Many include Indigenous representation on their boards.
- Engage in cooperative planning, share profits.
- Have MOUs, employment contracts, training and education.
- Learning about forest stewardship and cultural values and practices.



BC Community Forest Association

- The BCCFA is a non-profit society with a mandate to serve as the voice and advocate for community forestry in BC.
- We provide input on forest policy and work with government to expand community forestry in BC.
- We provide educational resources and extension services, and support communities striving to obtain and successfully implement community forest initiatives.
- 48 members across BC



Priority Recommendations

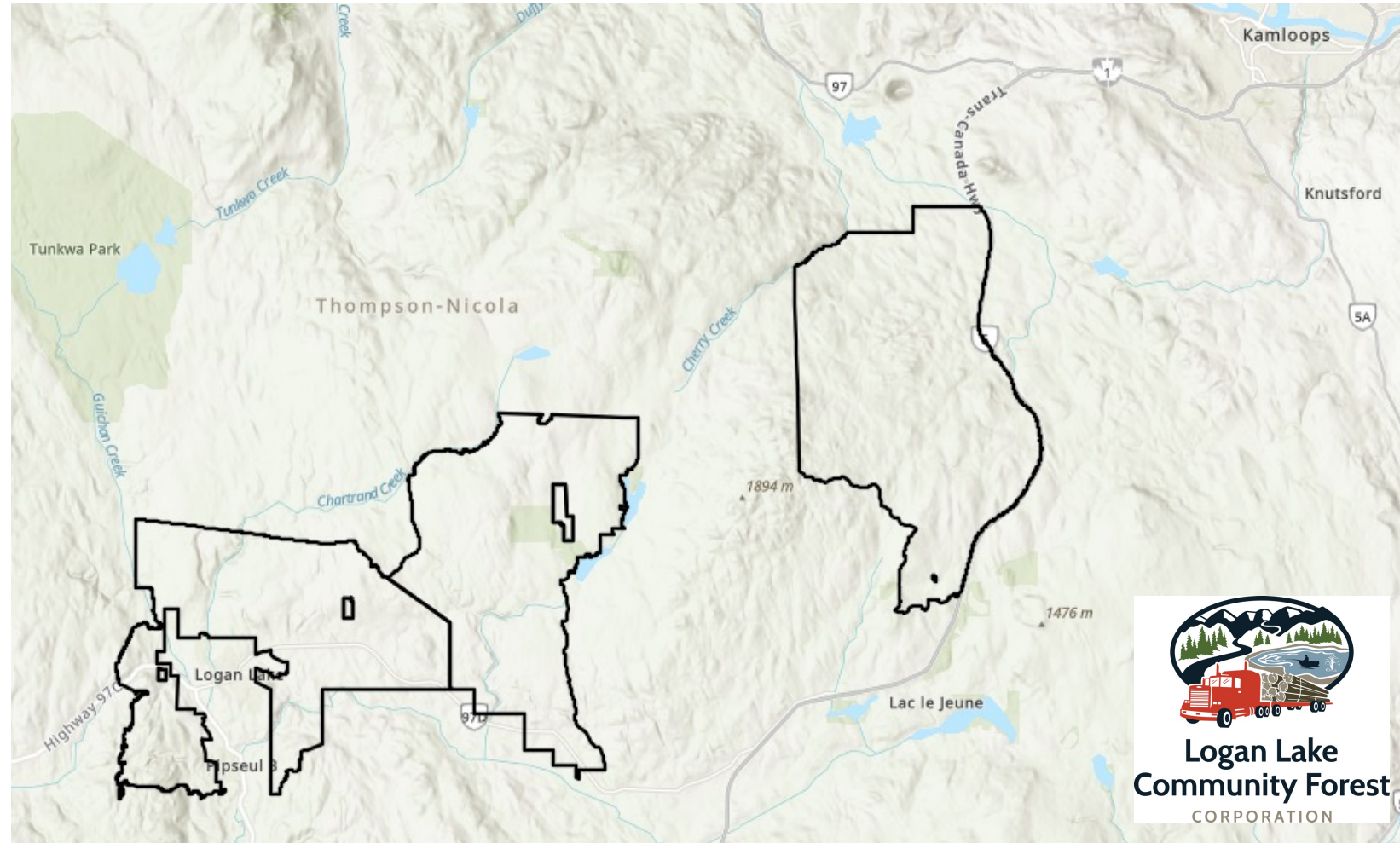
1. **Expand the CFA Program:** Create new and expand existing CFAs, focusing on a 10km WUI.
2. **Effective Wildfire Risk Reduction:** Provide multi-year funding and work with the BCCFA to ensure that regulations support effective WUI management.
3. **Maintain Stumpage Rates for CFAs:** crucial for CFAs to operate sustainably, create local jobs, and provide economic benefits while managing for multiple values on the land.



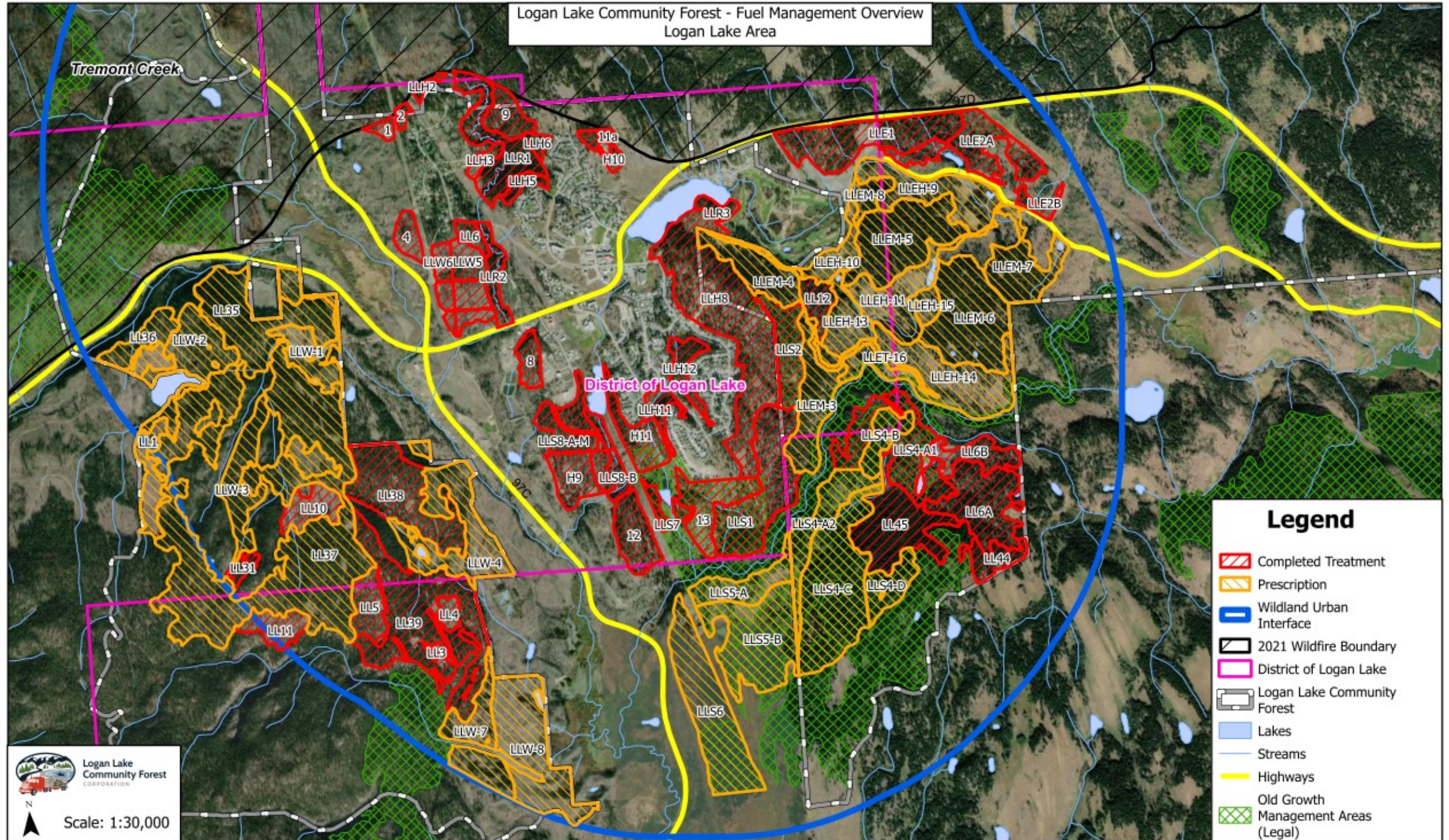


Logan Lake Community Forest Examples

- Wildfire Resiliency Initiatives
- Partnerships
 - First Nations
 - BCWS
 - Local Gov
 - “the community”



Logan Lake Community Forest - Fuel Management Overview
Logan Lake Area



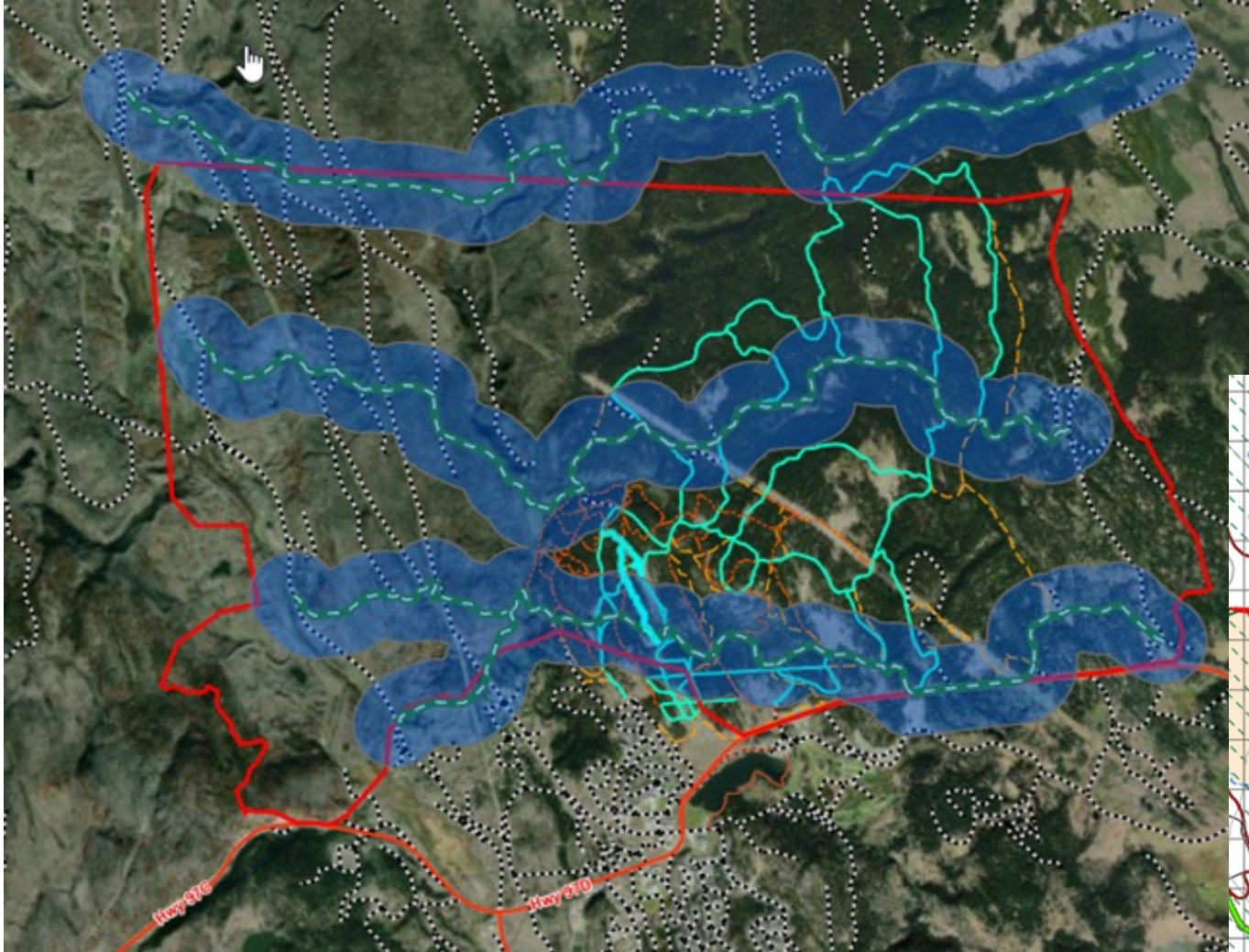
Scale: 1:30,000

Fuel Management – WUI +

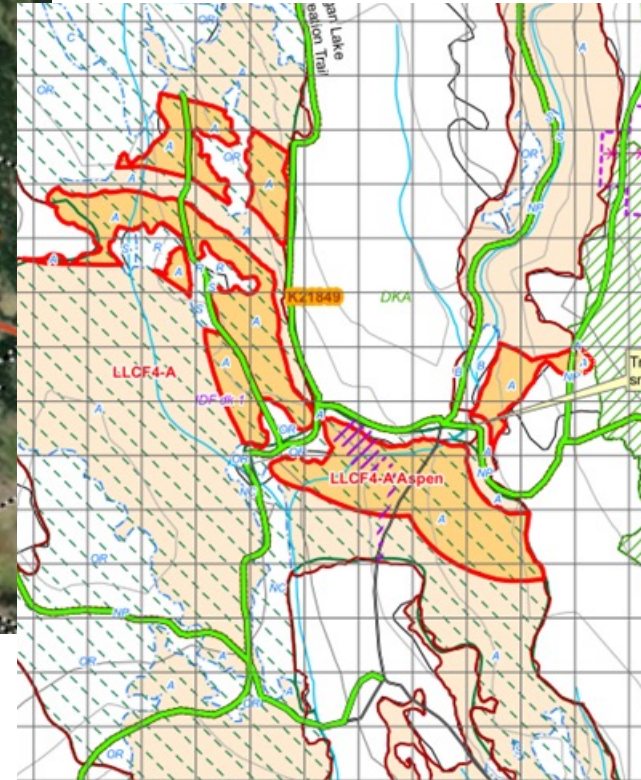
- Since 2007 in some form
- Partial harvest, small machine, hand, etc.
- Highschool kids



Post-Wildfire Landscape Fuel Corridors



- Locations to action from
- Managed/known fuels
- Manage for Aspen +
- Stocking standards next...



Coquihalla Corridor – Landscape Fuel

- Partial harvest
- Fuel Treatment
- Prescribed fire
- Stocking standards...
- Maintenance – burning



Face/Paska Lakes Community

- Historical fuel treatments (red)
- Planned Evac Corridor harvest/fuel treat
- Initiated detailed **Wildfire Risk Mgt Plan**
 - FireSmart in community - TNRD
 - Fuel Treatments around - LLCF
 - Community/BCWS Arrangements, S100, etc.
 - Evacuation Routes



Logan Lake
Community Forest
CORPORATION

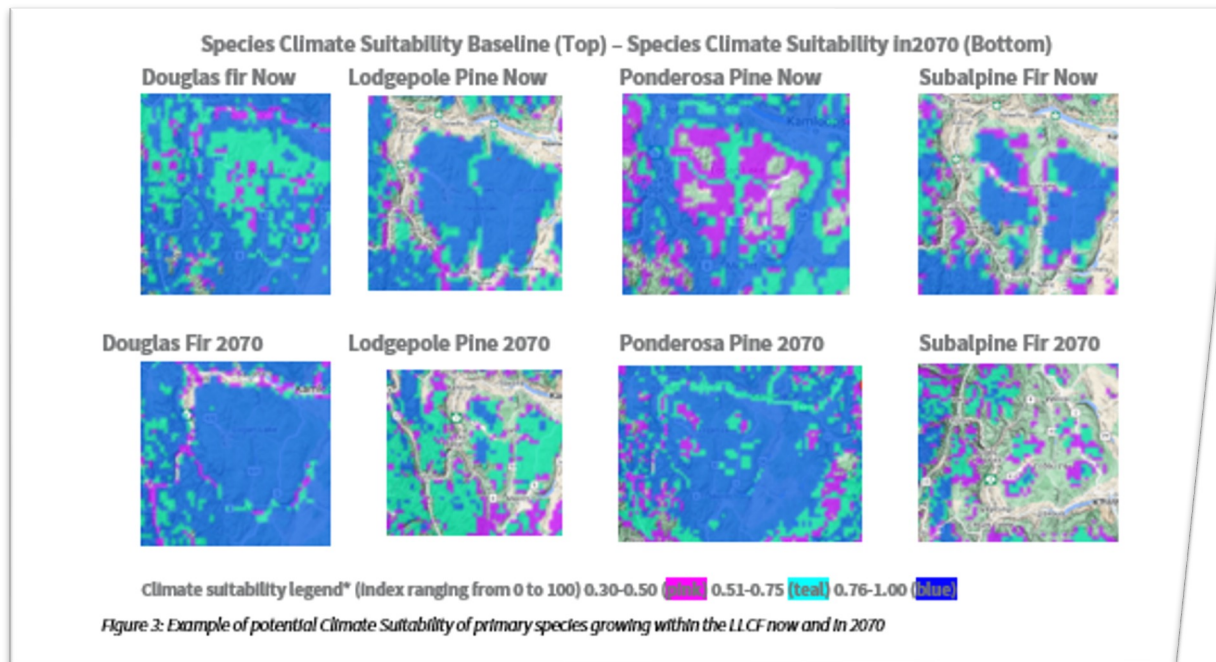


Climate Change Concerns Increasing

- Responding now, need to formalize...
- Mitigation planning in progress



Logan Lake
Community Forest
CORPORATION



Implications of Climate Change

Logan Lake Community Forest
2024-07-04

BACKGROUND

There is a strong scientific consensus that the Earth's climate is changing, primarily due to human caused greenhouse gas emissions. Adapting to this changing climate is fraught with uncertainty as there is no way to accurately anticipate what the "real future" will be. Models are often used to anticipate "real life" but our ability to model the rules and constraints to anticipate human behaviour come with challenges.

The International Panel on Climate Change has tried to anticipate the impact of our greenhouse gas emissions through a variety of Scenarios, projecting what the climate might be like in coming decades. Regardless of which scenario might ultimately become reality (if any), organizations (e.g., Pacific Climate Impacts Consortium, the University of British Columbia, etc.) have taken these projections and created tools that provide interpretations of how these changes may affect a variety of values (e.g., water, infrastructure, new resources, etc.). This document provides information generated by some of these tools to help inform Community Forest Managers about what the implications a changing climate may have on resources within their tenure. This information can then be used to support future climate change adaptation planning dialogues and planning!

GENERAL OVERVIEW

The geographic location of the Logan Lake Community Forest (LLCF) encompasses approximately 30,000 hectares anchored around the District of Logan Lake and extends east along highway 24C to Morrison Creek and north to Face Lake. A second area totaling approximately 6,800 hectares is located along the west side of highway 5 (Coquihalla Highway) extending from Alkali Creek 13.5km south to Stake Lake (Figure 1). The area is also located within the Traditional Territories of several First Nations². The leading tree species within the LLCF is Douglas fir (48%) along with lodgepole pine (40%). Due to the recent Mountain Pine Beetle infestation, the Timber Harvesting Land Base is made up of a high proportion of age class 1 (26%)³ (trees aged 1-20).

Ecologically the LLCF encompasses four Biogeoclimatic Zones (Table 1) with most of the area occurring within the IDFdk1 and MSxk2 subzones. Within these dry forests, the LLCF manages for a diversity of values using a variety of strategies that involve the use of uneven-aged management systems such as partial cut, single tree selection, and group selection where stand attributes warrant. The values* being managed for within the LLCF include local water licenses, lakes, old growth areas, range tenures and leases, trapline, Critical Mule Deer Winter Range, Critical Moose Winter Range, Flammulated Owl and Lewis's Woodpecker habitat, and Visual Quality Objectives.

Summers within the LLCF are currently comfortable with the average daily high temperature above 18°C with July highs of 23°C and lows of 9°C.

*Projections are based on models with incomplete data and so any actions should only be undertaken in consultation with the appropriate professional.

²The LLCF fall within the Traditional Territories of the Skeechest First Nation, Neskonlith Indian Band, Okanagan Indian Band, Ashcroft Indian Band, Coldwater Indian Band, Nicola Indian Band, Siska Indian Band, Cook's Ferry Indian Band, Lower Similkameen Indian Band, Pentiction Indian Band, Upper Nicola Band, Boston Bar First Nation, Skeechest Indian Band, Kootenai Indian Band, Lower Nicola Indian Band, Oregon Jack Creek Band Lytton First Nation, and Secwepemc Nation

³https://www2.gov.bc.ca/assets/gov/farming-natural-resources-and-industry/forestry/landwardship/forest-analysis-inventory/data-management/spatial-ready-data/m2017_age_class_map.jpg

⁴https://www.loganlakecommunityforest.com/wp-content/uploads/2021/03/LLCF_FSP_document.pdf

Figure 1: LLCF BEC Locations

Partnerships and Collaboration



26



- Strategic MOUs
- Collaborative mgt
- Activity/Contracts for implementation
 - Fuel Treatment
 - Road Rehabilitation
 - Trail Building/Restoration, Signage
 - Soon to be harvesting...



And More!!

Ranchers, trappers, water licence holders, rec groups, individuals, general public



Provincial Mandate to Expand Community Forest Program

- Community forest expansion has been included in the Minister of Forests mandate letter.
- We don't yet know government's plan to action expansion.
- No targets currently set for expansion.
- BCCFA is working closely with Ministry staff to determine next steps

Challenges to Program Expansion

- Minister Parmar: most existing community forests want to expand, and many communities who don't have one want one.
 - The reality is that people will be disappointed. Ministry can't provide a community forest to everyone who wants one.
- Limitations on available tenure.
- Ministry has stated that no new community forests will be issued in 2025.
- Priority is to develop policy and path forward for how expansion will work.

What Can Communities Do Now?

- **Meaningful relationships with local First Nations** in the community forest initiative should be cultivated. Is there interest in a partnership?
- **Build support**, consensus and understanding in your community.
- A lot of work and **volunteer hours** to get a CFA started. Need a champion or team who can lead.
- CFAs are about more than revenue. **Determine your priority values.**
- **Perseverance** – don't take no for an answer.

What Can Communities Do Now?

- Express interest and begin **engagement with your Ministry of Forests District office and the BCCFA.**
- **Connect with BCCFA** to gather resources and information.
- **Advocacy from local elected government reps at UBCM** with the Minister is important, as are letters of support from interested stakeholders, including industry.
- **Participate in local Timber Supply Review** and represent your interests.
- You must be invited to apply for a community forest.

Become a BCCFA Member

- Membership is open to all communities, supplier organizations and individuals
 - Stay updated on important policy developments.
 - Access the network of knowledge and experience of community forest practitioners and BCCFA staff.
 - Opportunities for participation in special projects with BCCFA partners such as UBC and BCWS, discounts on in depth extension services, and discounts on conference fees.





BCCFA 2025 Conference & AGM



May 26-28, 2025



Nanaimo, BC



British Columbia
**Community
Forest**
Association

local people, local forests, local decisions

Thank you!

Questions?

Please reach out:

- Carly Dow, BCCFA
- cdow@bccfa.ca
- Randy Spyksma, LLCF
- rspyksma@forsite.ca

Visit www.bccfa.ca for more information

